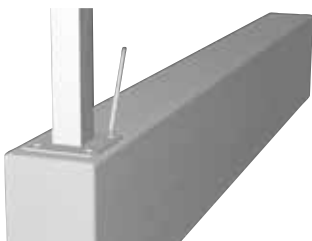


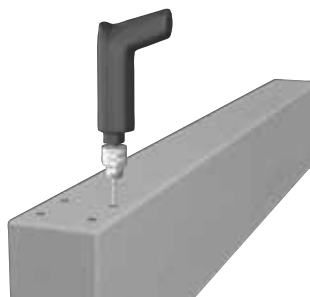
fencing ASSEMBLY INSTRUCTIONS

INSTALLING THE GALVANIZED STANDS

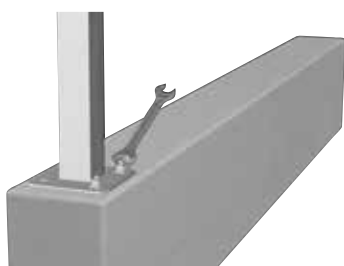
Bolt down stand



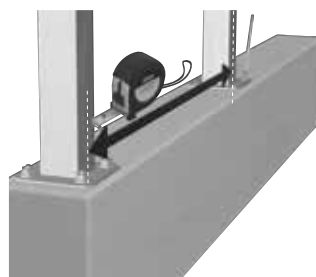
Place the first stand on the base and mark the holes on the plinth or concrete part.



Drill holes.



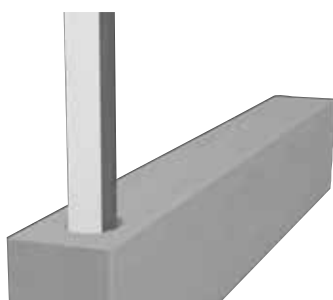
Place the galvanized stand and fasten it.



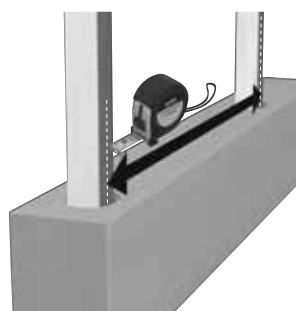
Measure the position of the next galvanized stand (from post centre to post centre).

- * PRIVACY spacing with Wpc stand: 1520 mm.
- * PRIVACY spacing with aluminium stand: 1490 mm.
- * VEDO NON VEDO spacing with Wpc stand: 2050 mm.
- * VEDO NON VEDO spacing with aluminium stand: 2020 mm.

Drivable stand

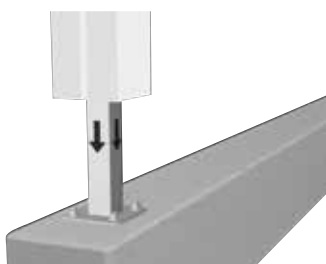


Insert the stand on the cement or in the holes made with the core drill.

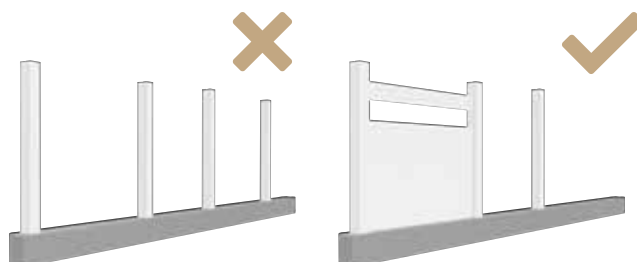


Measure the position of the next galvanized stand (from post centre to post centre).

- * PRIVACY spacing with Wpc stand: 1520 mm.
- * PRIVACY spacing with aluminium stand: 1490 mm.
- * VEDO NON VEDO spacing with Wpc stand: 2050 mm.
- * VEDO NON VEDO spacing with aluminium stand: 2020 mm.



Insert the WPC posts on the stands.



Do not install all the stands: proceed progressively to correct any calculation errors.

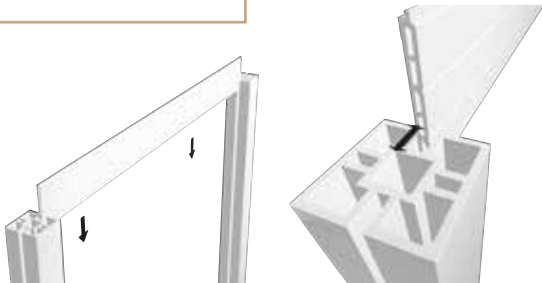
Installation instructions

INSTALLING THE SLATS

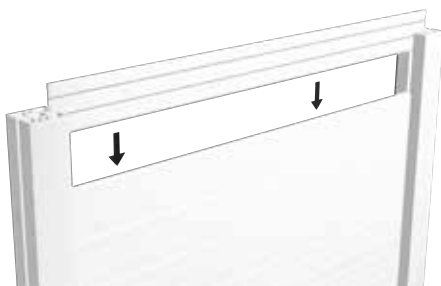
Privacy



Instruction video



Insert the "Privacy" slats into the groove at the top of the WPC post.



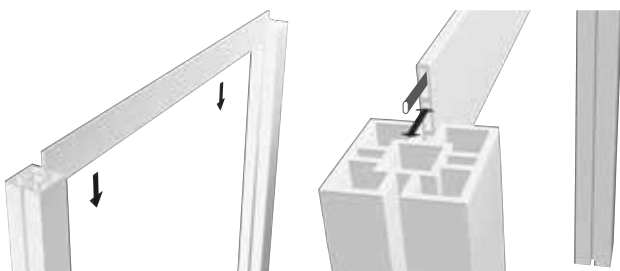
Insert the finishing slat last.



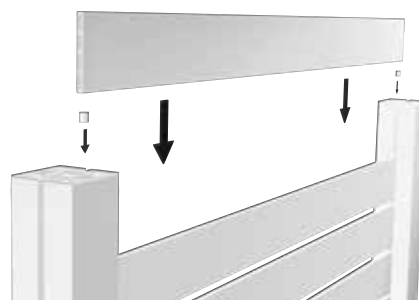
Vedo non vedo



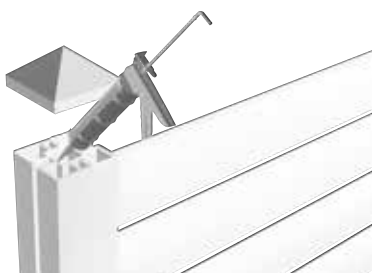
Instruction video



Insert the "Vedo non vedo" slats with reinforcing core (20x10 mm cold galvanized) into the groove from the top of the WPC post.



Insert the spacers between each slat into the channel of the post from above.



Close the top of the post with an end cap with screws or two-component epoxy glue.



* If the spacing has been respected there will be 5 mm space left on both sides between the end of the slat and the posts, so as not to damage the structure in case of thermal expansion of the WPC Bamboo slats.

** We recommend the assembly kit for greater fencing security (assembly instructions p. 58)

INSTALLATION OF THE PRIVACY / TREND / DELUXE FASTENING KIT



Insert the reinforcing core into the top section of the rounded privacy slat.



Position the fastening kit at the top section and fasten the screw into the reinforcing core.



Insert kit and slat into the stand, adjusting the position.



Insert the kit on both sides of the slat.



Completely insert the kit.



Proceed with inserting the cap.

INSTALLATION OF THE VEDO NON VEDO / TREND / DELUXE FASTENING KIT



Position the fastening kit at the top section and fasten the screw into the reinforcing core.



Insert kit and slat into the stand, adjusting the position.



Insert the kit on both sides of the slat.



Completely insert the kit.



Proceed with inserting the cap.