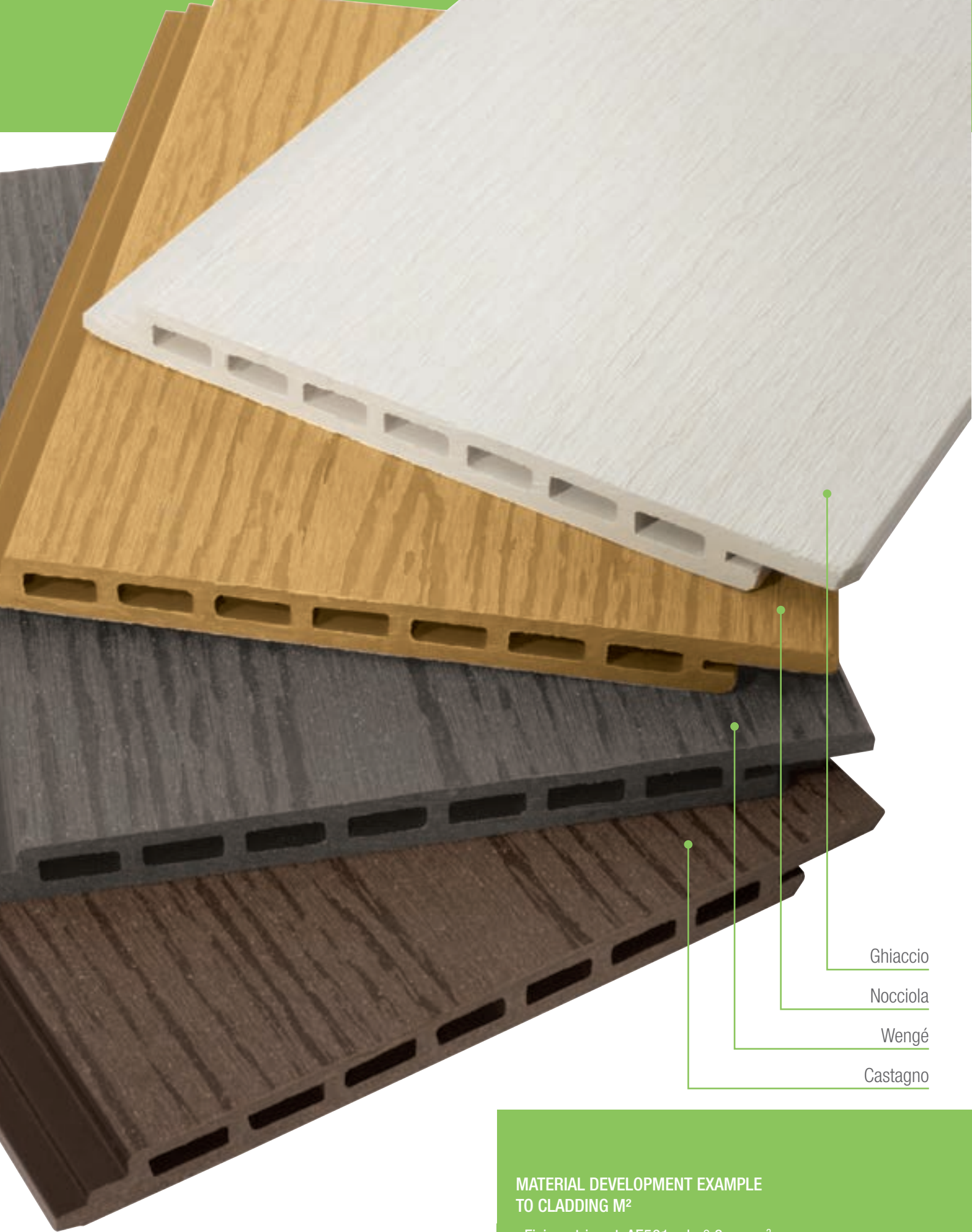






CLADDING

Excellent **thermal and acoustic insulator**, WPC Bamboo allows to energetically requalify a building, guaranteeing a remarkably designed aesthetic result.



Ghiaccio

Nocciola

Wengé

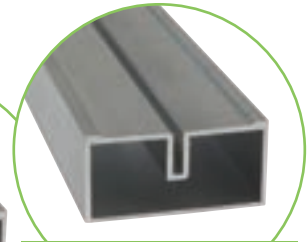
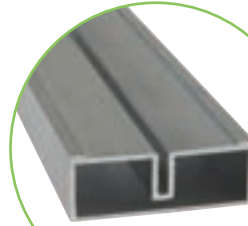
Castagno

**MATERIAL DEVELOPMENT EXAMPLE
TO CLADDING M²**

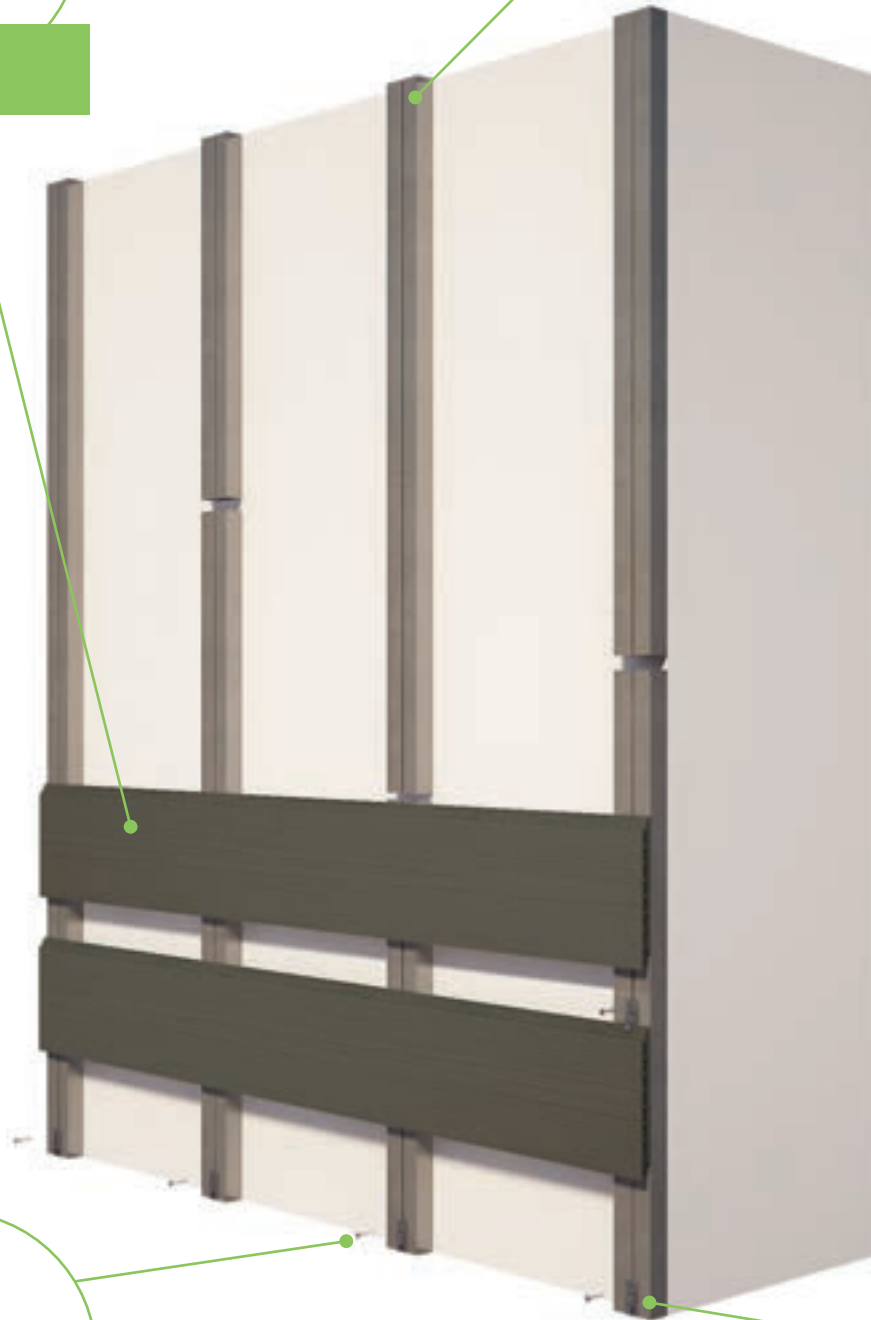
- › Fixing strip art. AF501 ml n° 3 per m²
- › Clips art. AF603 pc. n° 23 per m²
- › Galvanized steel screws per clips art. AF701 pz. n° 23 per m²



Slat for cladding



Fixing strips in aluminium



Screws



Clips for fixing



CODE LIST

Characteristics	Code list and colours				Dimensions (mm) L x H x Sp.
	Ghiaccio	Wengé	Nocciola	Castagno	
SLATS FOR CLADDING					
Cladding for outdoors	AF302GD	AF304WD	AF306ND	AF308CD	2900x152x12



Slat for wood
effect cladding

Colours available for slats

Ghiaccio



Wengé



Nocciola



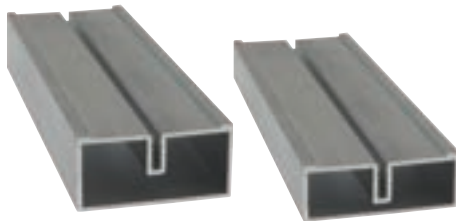
Castagno



* The actual colours may be different to those shown, it is possible to request colour samples

CODE LIST

Characteristics	Code list	Dimensions (mm) L - B x H x Sp.
FIXING STRIP		
Aluminium fixing strip	AF501	L 2200 50x25x2
Aluminium fixing strip	AF503	L 2200 50x15x2
FIXING CLIPS		
304 stainless-steel clips for cladding	AF603	35x15x6
SCREWS		
304 stainless-steel screws	AF701	3,9x16



Fixing strips



Clips for cladding



Screws

ASSEMBLY INSTRUCTIONS

1 Install the aluminum fixing strips in a smooth surface, respecting the distances as shown in the drawing.

2 After fixing the strips use code AF603 clips to fix the first slat, then continue the installation using always code AF603 clips.

FIXING STRIP SPACING - VERTICAL SLATS

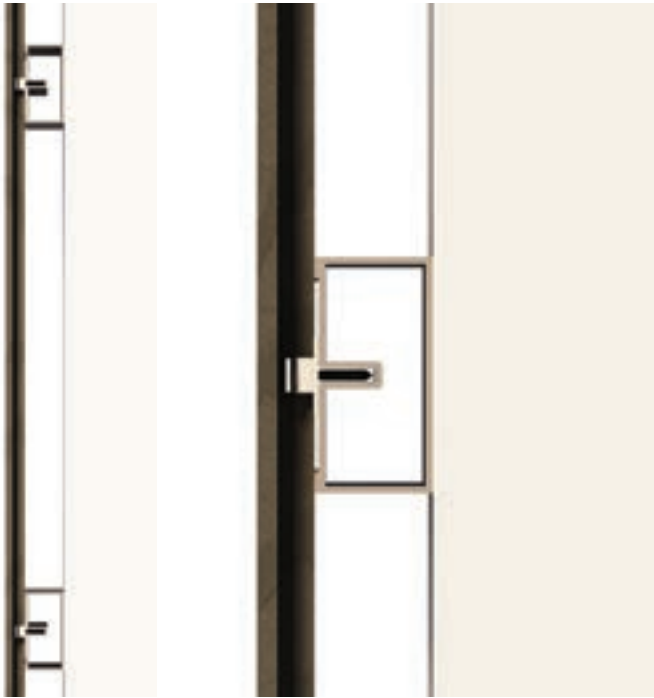


FIXING STRIP SPACING - HORIZONTAL SLATS

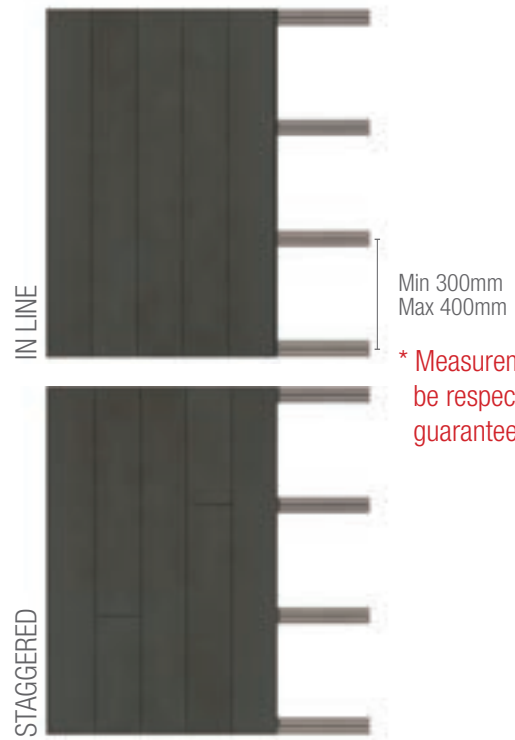




3 Inserting detail of screws, clips and slat combination.

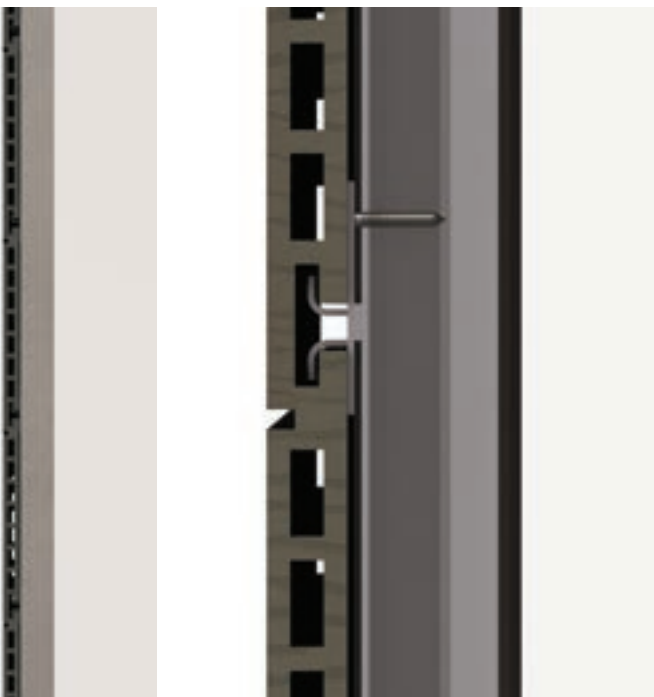


3.1 Vertical installation detail

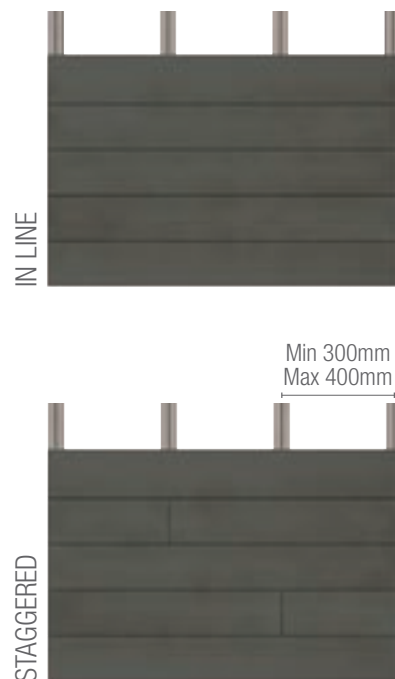


* Measurements must be respected for the guarantee validity.

3.2 Vertical installation



3.1 Horizontal installation detail with clips



* Measurements must be respected for the guarantee validity.

3.2 Horizontal installation